



Finansē
Eiropas Savienība
NextGenerationEU



Data Curators at the Intersection of IT, Research, and Data - Latvian Experience of Building the Research Ecosystem



LATVIJAS
UNIVERSITĀTE



Latvijas
Biozinātņu un
tehnoloģiju
universitāte



AUGSTĀKĀS IZGLĪTĪBAS UN ZINĀTNES IT
KOPIETOŠANAS PAKALPOJUMU CENTRS



About Rīga Stradiņš University

- Rīga Stradiņš University (RSU) has been recognized as the university with the best reputation in Latvia for almost a decade now
- Over the past seven decades, we have evolved from being a local medical institute to being a modern European university in the fields of **medicine, healthcare, and social sciences**



Faculty of Pharmacy



Faculty of Dentistry



Faculty of Law



Faculty of Medicine



Faculty of Public Health and Social Welfare



Faculty of Communication



Faculty of Rehabilitation



Faculty of European Studies



Faculty of Residency

11 755

students

61

study programmes

~700

students undertaking Graduate Medical Training

82

student source countries

8

programmes in English

3068

international students

>150

doctoral students

35

study bases



RĪGAS STRADIŅA
UNIVERSITĀTE



Data Steward Team at RSU



**Viola Daniela
Kiseļova**



Līna Lāže



Laura Badūne



**Agate
Jarmakoviča**



About Us - Data Stewards

Lina Laze

Now:

- Data steward at RSU
- Pharmacology lecturer at RSU

Previously:

- Senior expert in State Agency of Medicines of the Republic of Latvia
- Senior expert in Latvian Council of Science
- Community and hospital pharmacist

Education:

- Degree in pharmacy and clinical pharmacy

Viola Daniela Kiselova

Now:

- Data steward at RSU
- Lecturer at Institute of Public health, RSU

Previously:

- Data analyst at Institute of Microbiology and Virology, RSU
- Health promotion coordinator at Centre for Disease Prevention and Control of Latvia

Education:

- Currently – MS in Biostatistics
- BSc in healthcare science (Public health)



Main Objective- Open Science

The ethics of open science are based on the belief that wider access to controlled scientific data will contribute to the accumulation of richer knowledge

Goal: to make scientific research, data, code, and publications **freely available to everyone without restrictions**



Result: research **transparency, collaboration** and **reproducibility** to increase the **accessibility and impact of scientific knowledge**



Open Science in Europe

FAIR Data

Research Integrity

Next Generation Metrics

Future of Scholarly Communication

Citizen Science

Education and Skills

Rewards and Initiatives

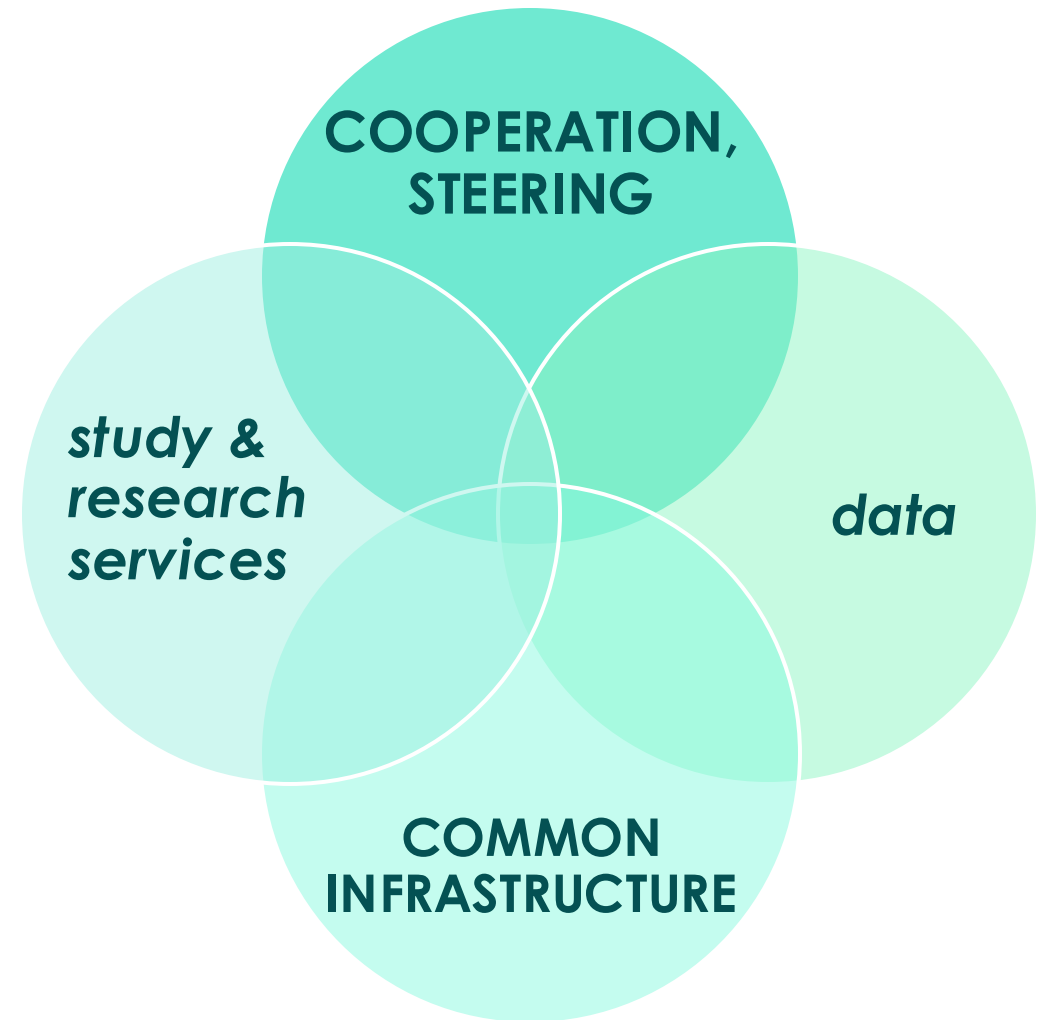
European Open Science Cloud (EOSC)



What is VPC?

VPC.LV – organisation of four Latvian Research Universities to **integrate, develop and provide high-quality shared IT services in higher education**

similar to csc.fi, surf.nl, snd.se





VPC Vision for Comprehensive Data Services

Searching

- identifying data needs
- searching for available data
- working with data sources

Formalities

- data specifications
- data requests, permits
- contracts, procedures, requirements
- payments and reports
- GDPR, IP, etc

Preparing

- merging, cleaning, anonymizing
- preparing datasets

Processing

- data storage and access
- tools: analytical, visualization, programming, AI, HPC
- Secure Processing Environments

Repository, reuse

- research data repository (*DataverseLV*)
- data quality
- promoting available data
- data catalogues

Support

- consulting, training, outreach, collaborations
- standard data policies, procedures, requirements, solutions
- standard contracts, payments, processes

*EOSC National Node
integration w/ EU Data Spaces*



"Data Stewards" project

project «Support for implementing Open Science, developing solutions for shared use of research data, and participation in the EOSC» (RRF 2.1.3.1.i.)

- goals:
 - repository
 - data management systems
 - capacity development
 - data stewards' network
- 2024-2026, €3.4m
- 4-5 stewards at each university,
5-6 at VPC



**joint
activities
(VPC)**

**stewards at
universities**



The Role of Data Stewards



Development of data management guidelines and regulations



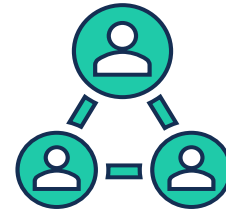
Bridge between the researchers and other departments (IT, legal ect.)



Organising trainings, seminars



Data quality assurance



Support for researchers



International collaboration and networking



DataverseLV university instance administration




What's Done

- ✓ the data stewards' network established
- ✓ self-studies, materials ~100hr
- ✓ ~490 DMPs, ~250 consultations, ~10 events
- ✓ RDM situation analysis + plans in 4 universities
- ✓ institutional RDM regulations, information (*RDM guidebook*)
- ✓ DatavarseLV (*pilot*)
- ✓ training at the  | D | C | C , University of Edinburgh

Datu pārvaldība

Cycle

 Vispārēja informācija

 Search

Cycle

 Plānošana ▾

 Datu vākšana ▾

 Primārie dati ▸

 Sekundārie dati ▸

 Sensitīvi dati ▸


 Datu apstrāde ▾

 Datu glabāšana ▾

 Datu koplietošana ▾

Engage

 Palīdzība ▸

 Pasākumi ▸

 Par mums ▸



Data Steward Competency Training in Edinburgh



THE UNIVERSITY
of EDINBURGH





What's Next

- developing specific RDM topics:
 - anonymisation, pseudonymisation
 - IT tools – availability, regulations, instructions, support
 - repositories, metadata, documenting data
 - data quality & security
- special data (*GDPR, health, public sector, classified, IP, commercial, etc.*)
- outreach, international networking
- preparing and depositing datasets
- CoreTrustSeal certification for DataverseLV



DS services for other institutions:

- DM policies & regulations
- IT tools
- DM consultations

datukuratori@vpc.lv



Our Network of Data Stewards



Finansē
Eiropas Savienība
NextGenerationEU



2027
Nacionālais
attīstības plāns



RĪGAS TEHNISKĀ
UNIVERSITĀTE

datukuratori@rtu.lv



RĪGAS STRADIŅA
UNIVERSITĀTE

datukuratori@rsu.lv



LATVIJAS
UNIVERSITĀTE

datukuratori@lu.lv



Latvijas
Biozinātņu un
tehnoloģiju
universitāte

datukuratori@lbtu.lv



AUGSTĀKĀS IZGLĪTĪBAS UN ZINĀTNES IT
KOPIETĒŠANAS PAKALPOJUMU CENTRS

datukuratori@vpc.lv



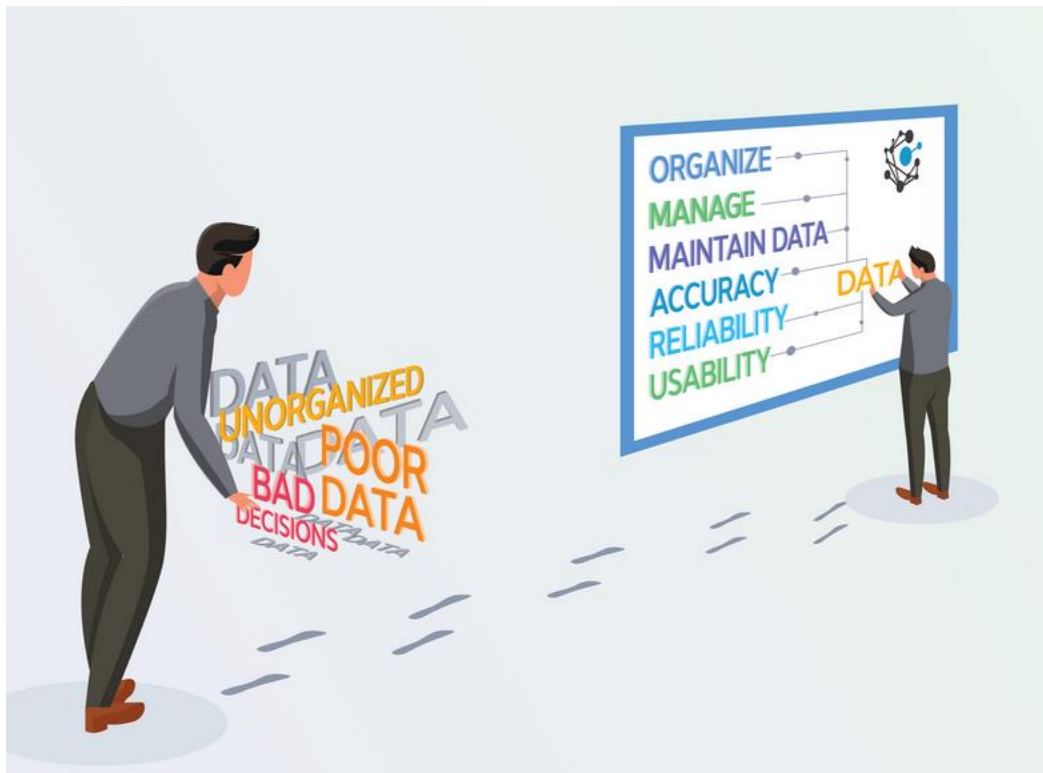
What Happens When Data is Unorganized?



“Without a systematic way to start and keep data clean, bad data will happen.” /Donato Diorio/



What is a Data Steward?



Data steward is a professional responsible for managing, organizing, and ensuring the quality and accessibility of data throughout its lifecycle.



Role of Data Stewards in the Research Ecosystem

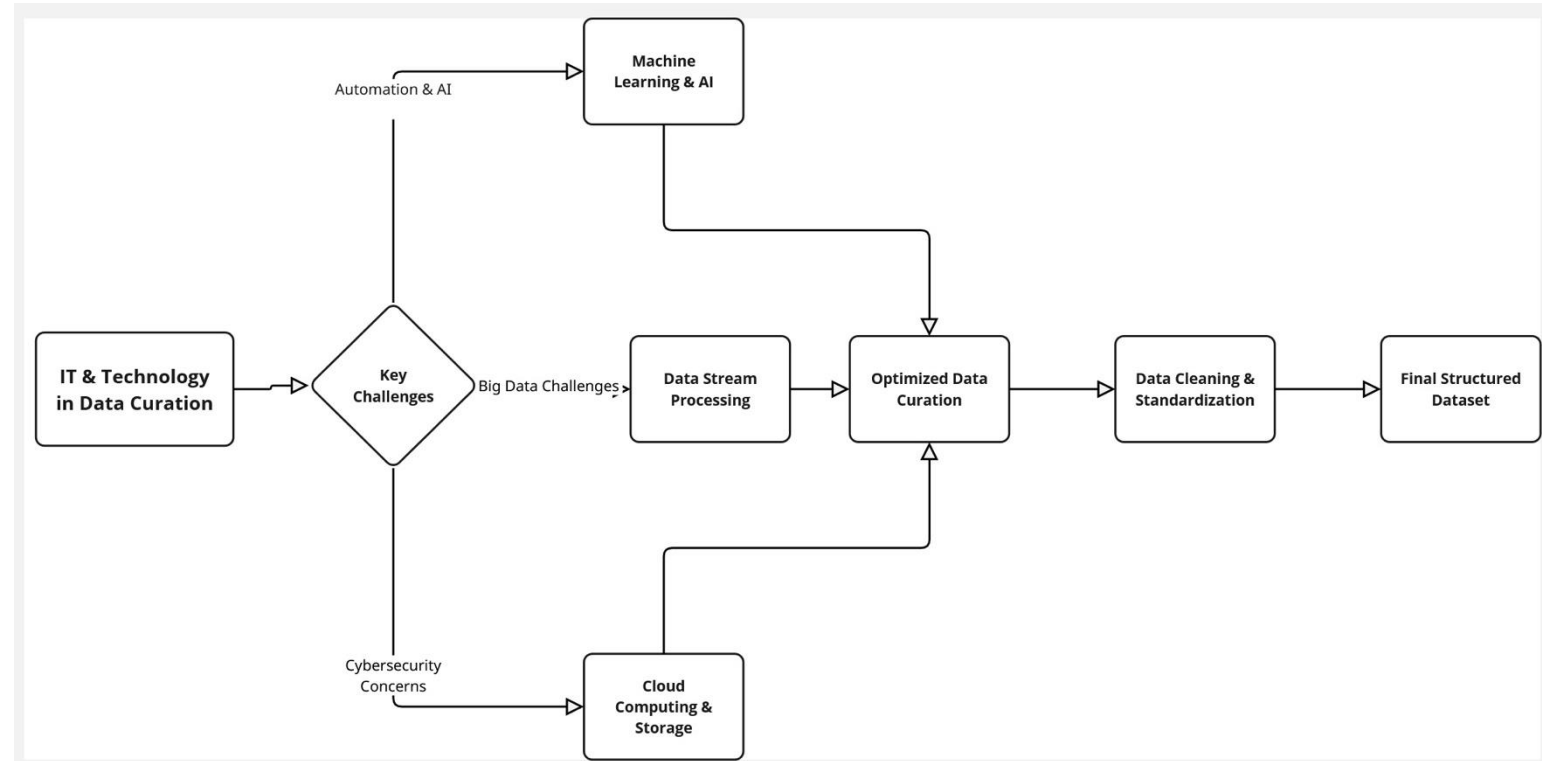
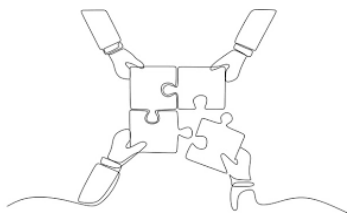
-  **Data Organization & Management**
-  **Quality Control**
-  **Metadata Creation**
-  **FAIR Principles**
-  **Data Preservation**
-  **Collaboration with Researchers**





IT and Innovation in Data Curation

How IT-driven solutions streamline data curation, making it more efficient, scalable, and secure in modern data-intensive environments?





Challenges



Scalability issues



Metadata & Interoperability



Data privacy & Security



Long-Term Data Preservation



Data Quality & Integrity



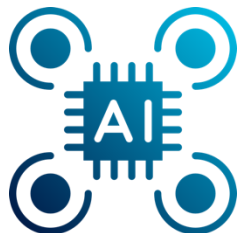
Data Bias & Representation



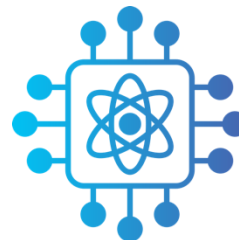
Cost & Resource Constraints



Future Directions & Innovations



AI-driven Automation



Interoperability & Standardization



Blockchain for Data Integrity



**Quantum Computing
for Big Data Curation**



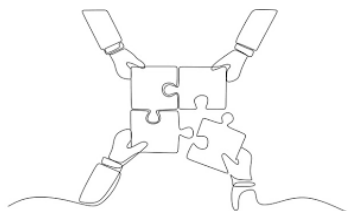
Edge Computing in Data Curation



Conclusions

- 📌 Ensuring Research Integrity & Reproducibility
- 📌 Facilitating Collaboration & Accessibility
- 📌 Managing Big Data Challenges
- 📌 Enhancing Security & Compliance
- 📌 Shaping the Future of Research

"Data curation is the foundation of reliable, accessible, and impactful research. Investing in technology-driven curation ensures scientific progress and global collaboration."





Finansē
Eiropas Savienība
NextGenerationEU

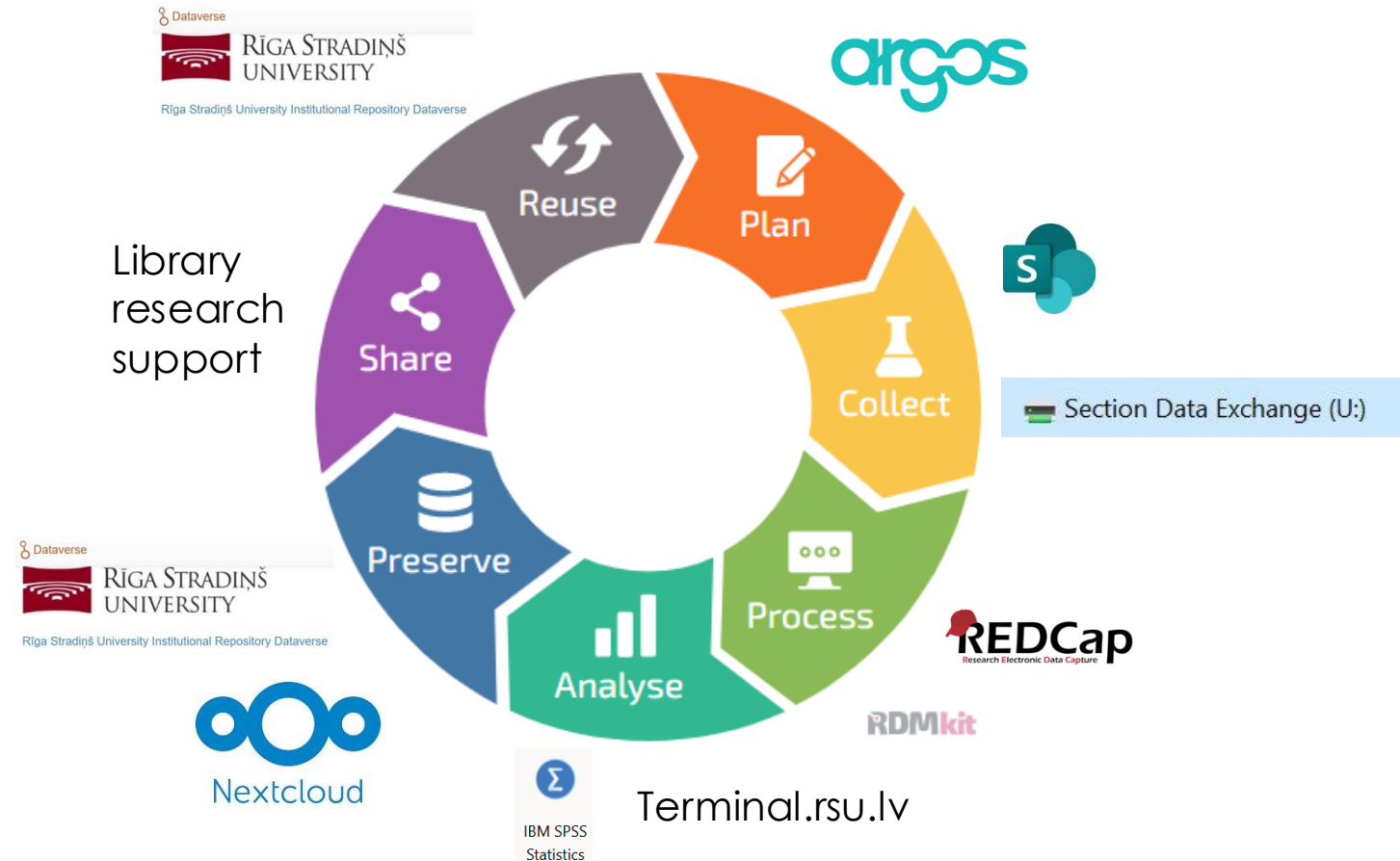


RDM practices at Rīga Stradiņš University



Consultations for Researchers

From September 1, 2024 – **over 150 consultations**
Support in all data life cycle stages





Short-Term Data Storage


During the research, data can be stored:



On RSU internal server infrastructure;



In secure cloud services – for example, SharePoint, Nextcloud

 Section Data Exchange (U:)



Nextcloud



RSU Dataverse – Institutional Repository

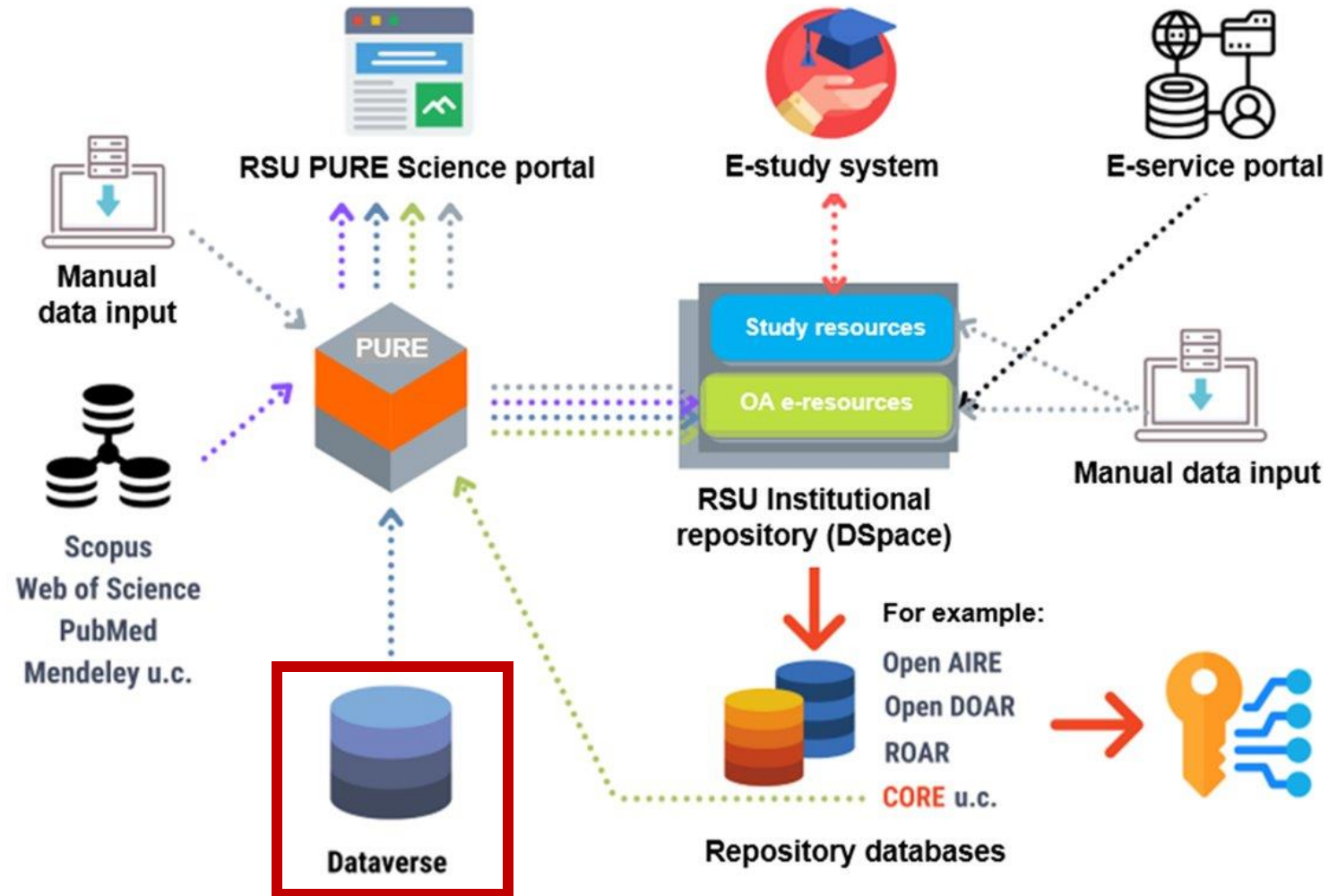
- Open-source code
- Open metadata standard (DDI)
- Backups
- Automatic licensing (Creative Commons)
- Unique identifier (DOI)
- Open and restricted access
- Automatic versioning

The screenshot shows the RSU Dataverse website. At the top, there is a header with the 'Dataverse' logo and the 'RĪGA STRADIŅŠ UNIVERSITY' logo. Below the header, the text reads 'Rīga Stradiņš University Institutional Repository Dataverse (Rīga Stradiņš University)'. A 'Metrics' section shows '1,002 Downloads'. A search bar contains the text 'Search this dataverse...' and a magnifying glass icon, with a link to 'Advanced Search'. Below the search bar, there are filter options: 'Dataverses (4)', 'Datasets (94)', and 'Files (636)'. Under 'Dataverse Category', there are 'Organization or Institution (3)' and 'Research Project (1)'. On the right, a search result is displayed for 'GreenCare National Survey' dated 'Apr 30, 2025', with authors 'Bite, Dina; Luse, Agi' and 'University Institution:'. A description below the result states: 'A nationally representative public healthcare sector by the Latvian'.





Dataverse in RSU IT Ecosystem





RSU Software and IT Tools Catalog

Research Preparation Stage	▼
Data Collection and Collaboration Stage	▼
Data Analysis and Processing Stage	▼
Results Interpretation and Visualization	▼
Publication Preparation and Documentation	▼
Data and File Storage/Accessibility	▼
Cloud Solutions	▼
Project-Acquired Tools	▼
Supporting Tools	▼
Repository	▼
Research Information Management System	▼

Research Information Management System ▲

ZDIS PURE is part of the Latvian Research Information System (ZDIS), based on Elsevier's Pure platform. It provides:

- ◆ Centralized storage of research information: publications, projects, conferences, and other research-related metadata.
- ◆ Integration with international registries and systems: ORCID, SCOPUS, and others.
- ◆ Implementation of open science principles: supporting open repositories and data management plans.
- ◆ Ability to track scientific activity and publication impact: citations, metrics, and other statistical indicators.





Seminars for Doctoral School

-  Introduction to RDM
-  Practical seminar – how to prepare a DMP
-  Data documentation
-  Short-term and long-term data storage



26
MAY

Videolekcija un seminārs “Datu kopu kvalitāte. Sagatavošana, tīrīšana un organizēšana pirms publicēšanas repozitorijā”

 15:00 - 16:30  attālināti, platformā Zoom

Dataset quality assurance. Preparing for depositing



New Institutional Guidelines and Procedures

- **Guidelines for the protection of patients' personal data in research**
- **Guidelines for the processing and storage of special category data**
- **Informed Consent Form**
- **Research Data Management Procedure**

DMP template
Metadata questionnaire
Application form for access to research data from RSU Dataverse



Finansē
Eiropas Savienība
NextGenerationEU



Thank you for your attention!



LATVIJAS
UNIVERSITĀTE



Latvijas
Biozinātņu un
tehnoloģiju
universitāte



AUGSTĀKĀS IZGLĪTĪBAS UN ZINĀTNES IT
KOPIETOŠANAS PAKALPOJUMU CENTRS